

830

1863 (14 Jan.) United States 3c. postal entire (edge tear and wear) used from Hong Kong to U.S.A. via London (3.3) and New York, showing red crayon "1/8" rating and "1/7" credit to Great Britain, red "16/cents" credit h.s. to U.S., black "New York Am. Pkt./5" (22.5), debit 5c. for inland postage due, "Hong Kong/Paid" (Webb type 14a) and reverse with "Hong Kong" (Webb type 13) in black (earlier than recorded by Pearson), fine. Photo

HK\$ 1,200 - 1,500

831

1864 (16 Apr.) entire letter to Hong Kong (29.5) bearing Great Britain 4d. vermilion pair and 1/- green (2, vertical crease through right stamps) tied by "4" barred obliterators, double the 1s. 4d. per 1/4 oz. rate, London origin backstamp, red crayon "2", one of only three recorded usages forwarded by special agents per French packet to the Far East, the British P.O. did not establish an official connection with the French packets to the Orient for the first 18 months of Messageries Imperiales Service, carried by "Tigre", slight erosion in address, fine. Photo

HK\$ 1,500 - 1,800

832

1865 (17 Nov.) envelope from London to Hong Kong (3.1.66) bearing 4d. plate 7 pair (crossed by filing crease) and 1/- plate 4 pair, cancelled "46", handstruck "1d" in red, and showing "Hong Kong/C" arrival c.d.s. in blue on reverse. Photo

HK\$ 2,000 - 2,500

833

1866 (18 Aug.) entire letter to Hong Kong (28.9) bearing France Empire 80c. (faulty) tied by "2240" dotted diamond cancellation, Marseilles origin c.d.s. and red framed "PD" h.s., addressed to commander of the ship Henri IV, docketed as received in Macao 8 Oct., the earliest recorded French usage by Messageries Imperiales Service to Hong Kong, carried by "Peluse" and "Tigre", entire with aging and tiny edge tear, fine. Photo

HK\$ 2,000 - 2,500

834

1867 (Jan.) envelope to the Engineer on U.S.S. "Shenandoah" at Hong Kong (8.4) bearing U.S. 1861 12c., two singles and pair cancelled by grid, partial East Smithfield origin c.d.s., red New York (2.2) and London (13.2) transits, red crayon "24" and "1d" h.s. credits, P&O "Delta" delayed by 3-4 days from Southampton to Alexandria possibly due to heavy weather, then carried by "Surat" on her maiden voyage from Egypt to Ceylon, envelope and stamps faulty. Photo

HK\$ 800 - 1,000

835

1867 (26 Feb.) envelope (flap at back missing) from Manchester to Shanghai (13.4) bearing 4d. plate 8 (2) and 1/- plate 4 (2), cancelled "498" and showing "Shanghae/C" c.d.s. in blue on reverse. Photo

HK\$ 2,000 - 2,500

836

1872 (1 Oct.) printed circular to Hong Kong (11.10) bearing Straits Settlements 2c. tied by framed "W M & Co" security h.s. and grid cancellation, reverse with Singapore (3.10) origin c.d.s., ms. "1d" credit, this is the earliest known inward printed matter to Hong Kong from another British Colony, very fine. Photo

HK\$ 1,200 - 1,500

837

Incoming mail to Hong Kong : 1848-74, group of four envelopes comprising 1848 (16 Feb., faulty) showing magenta "Paid 1/2" rating and Hong Kong (22.4) arrival, carried from Southampton to Egypt on P&O "Ripon" that was delayed by four days due to bad storm, 1864 (10 Jan.) bearing G.B. 4d. salmon and 1/- green cancelled by Edinburgh duplex for the "via Marseilles" rate, Hong Kong (25.2) arrival, and from the same correspondence 1864 (3 Feb.) bearing G.B. 1/- tied by Edinburgh duplex for the "via Southampton" rate (less common Orient mail routing), and 1874 (1 May) bearing 4d. salmon and 1/- green cancelled by London duplex and carried on the first voyages of the P&O "Lombardy" from Egypt to Galle and then on the "Venetia" to Hong Kong (few occurrences of first voyages by two ships on a single itinerary), fine. Photo

HK\$ 1,500 - 1,800

Issued Stamps

838

1862-74, an unused and used collection with some cancellation interest, including 1862 no watermark 2c. unused (regummed), 48c. used (2) and 96c. used (2), and 1863-74 watermark Crown CC 4c. perf. 12 1/2 used, 18c. used (2, one dramatically misperforated), 96c. olive-bistre used (fine), and 96c. brownish grey pair with watermark inverted, fair to fine, faults. S.G. 1-19. Photo (69)

HK\$ 8,000 - 10,000

839

1863-74 watermark Crown CC 30c. mauve with "Specimen" handstamp overprint inverted (type HK4), fine appearance unused, with part original gum, some rust on perfs. at top of the stamp. S.G. 16. Photo

HK\$ 2,000 - 2,500



Ex 838



839



840



Ex 841

840
30c. mauve, varieties "GKON" of Hong Kong damaged at foot and watermark inverted, cancelled in blue, fine and very rare combination of varieties. S.G. 16aw. Photo
HK\$ 4,000 - 5,000

cancelled by "Shanghai" c.d.s.), 1891 50c. on 48c. with extra Chinese characters surcharge unused (5, with pair unmounted mint), 1891 7c. on 10c. and 14c. on 30c. unused (2), fair to very fine, some faults (approx. 125). Photo

HK\$ 12,000 - 15,000

841
1876-98 surcharges, an interesting unused and used collection with multiples and cancellations, including 1876 16c. on 18c. used (3), 1880 5c. on 8c. used (4, pair), 5c. on 18c. used (4, pair), 10c. on 12c. used (4, pair), 10c. on 16c. used (4, one "S1"), and 10c. on 24c. used (4), 1885 20c. on 30c. (2) and 50c. on 48c. unused, 1891 \$1 on 96c. without Chinese characters surcharge (4, one superbly

842
1885 (Sept.) surcharges 20c. on 30c. to \$1 on 96c. on 1891 (4 June) registered envelope (light fold at foot) to Germany (9.7) cancelled by "Hong Kong/B" c.d.s., very fine and the only recorded cover with the entire 1885 issue. S.G. 40-42. Photo

HK\$ 60,000 - 80,000



842



Ex 844



845



Ex 846



Ex 848



849



Ex 847



Ex 851



Ex 852



860



Ex 853



Ex 854

- 843
1891 surcharge by Noronha and Sons 7c. on 10c. green, an unused and used selection (6) with varieties including small "t", antique "t" and comma after "cents", two have toning on reverse, the antique "t" is fine with part original gum. S.G. 43, a, var.
HK\$ 2,500 - 3,000
- 844
1891 surcharge with additional Chinese characters 20c. on 30c. to \$1 on 96c., fine unused with part to much original gum. S.G. 48-50. Photo
HK\$ 1,500 - 1,800
- 845
1898 surcharge with additional Chinese character 10c. on 30c. grey-green with large figures Chinese character surcharge, fine and fresh unused with much original gum. S.G. 55c. Photo
HK\$ 4,000 - 5,000
- 846
1907-11 New colours watermark multiple Crown CA 1c. to \$2 with additionally 2c. shade, fine unused with part to much original gum. S.G. 91-99. Photo
HK\$ 1,800 - 2,200
- 847
1912-20 K.G.V watermark multiple Crown CA 1c. to \$10, the thirty-one shades, fine used with large part to much original gum, one 10c. thinned and the \$5 green and red on blue-green with olive back has a vertical gum crease really only readily apparent from reverse. S.G. 100-116. Photo
HK\$ 20,000 - 25,000
- 848
1c. to \$10, the set of sixteen, the \$5 with tiny mark on front and a few foxed perfs. on reverse, otherwise fine unused with part to much original gum. S.G. 100-108, 110-116.
HK\$ 5,000 - 6,000
- 849
1912-21 K.G.V watermark multiple crown CA 2c. green, variety watermark inverted, blunt perfs. at foot and trivial corner creasing, otherwise fine used. S.G. 101w. Photo
HK\$ 5,000 - 6,000
- 850
1935 Silver Jubilee 3c. (2, one on reverse) to 20c. on 1935 (6 May) registered cacheted first day cover, cancelled by "Registered/Hong Kong" c.d.s., fine. S.G. 133-136. Photo on page 196
HK\$ 3,500 - 4,000
- 851
1938-52 K.G.VI 1c. to \$10, both issues, the complete set of 23 values, fine to very fine unused with much original gum. S.G. 140-162. Photo
HK\$ 2,500 - 3,000
- 852
1938-45 K.G.VI perf. 14 or 14 1/2 x 14 1c. to \$1 marginal blocks of ten, one \$1, variety short "R" in "dollar", unmounted mint, a few gum skips, the 4c. has slightly toned gum. Photo
HK\$ 5,000 - 6,000
- 853
1c. to \$1 blocks of six, unmounted mint, a few gum skips and the 4c. has slightly toned gum. Photo
HK\$ 3,000 - 4,000
- 854
1c. to \$1 marginal blocks of six, unmounted mint, a few gum skips, the 4c. has slightly toned gum, and one \$1 has tiny natural toned speck in paper on reverse. Photo
HK\$ 3,000 - 4,000
- 855
1c. to \$1 blocks of four, unmounted mint.
HK\$ 2,000 - 3,000
- 856
1c. to \$1 blocks of four, unmounted mint.
HK\$ 2,000 - 3,000
- 857
1c. to \$1, three sets of blocks of four, unmounted mint, the 4c. blocks have slight gum toning, one 20c. pair has oily horizontal gum streak.
HK\$ 5,000 - 6,000
- 858
1941-48 K.G.VI selection, including 1941 Centenary imprint blocks of four unmounted mint (some gum toning) and used, 1946 K.G.VI values (31) to \$10 (3) and 1947 Silver Wedding \$10 unused with much original gum (81).
HK\$ 2,500 - 3,000
- 859
1973 Q.E.II (Machin portrait) watermark Block CA sideways \$1.30 pale yellow and reddish violet complete sheet of fifty, 6th and 7th vertical row show spectacular printing flaw of yellow ink streak resembling a meteor and lighting up Queen's profile in yellow on lower two stamps, unmounted mint. S.G. 292var.
HK\$ 3,500 - 4,000



850



866



867



868



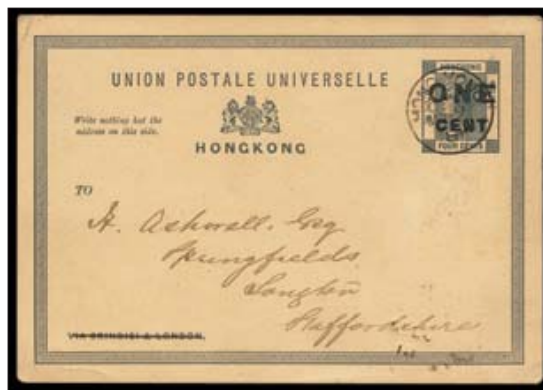
Ex 869



Ex 870



871



Ex 872



862

Postal Fiscals

860
1891 \$5 on \$10 purple on red, well centred, fine and fresh unused with much original gum. Yang F9; S.G. F9. Photo
HK\$ 1,000 - 1,200



861

861
\$1 on \$2 dull bluish green variety Chinese surcharge completely omitted, extremely fine unused with much original gum, rare. S.G. F11a. Photo
HK\$ 8,000 - 10,000

862
1902 (9 Oct.) registered envelope to Philadelphia (3.11) via San Francisco (28.10) bearing Postal Fiscal 2c. dull purple (2) and Definitive 2c., 4c., and 10c., cancelled by "Victoria/Hong Kong" c.d.s., with black on white registration label, tied by arrival c.d.s. on reverse, very fine and rare accepted postal use of these fiscals which were actually only authorized for postal use between 24-31 December 1890. S.G. 56, 57, 59, F8. Photo
HK\$ 40,000 - 50,000

Collections and selections

863
1880-1972, an unused and used collection, including 1880 surcharges complete used, 1948 Silver Wedding \$10 mint (hinged), 1954-62 Q.E.II 5c. to \$10 mint (3 sets, one set unmounted), and 1962-73 Q.E.II 5c. to \$20 mint (one range of \$2 to \$20 unmounted), and Postal Fiscals 1874-1904 15 1/2 x 15 \$2 unused and perf. 14 \$3 unused, and 1897 \$1 on \$2 unused (both shades), fair to fine (approx. 170).
HK\$ 8,000 - 10,000

864
1903-97, a mint or unused selection, including 1903 K.E.VII Crown CA \$2, 1925 K.G.V multiple script CA \$5, both with much original gum, and 1938 K.G.VI \$1 to \$10 unmounted mint (the \$10 has tiny adherences on gum), fine. Photo for three (approx. 70 stamps)
HK\$ 4,000 - 5,000

Stamp Duty

865
1867-85, a collection of Q.V. Stamp Duty with cancellation interest, comprising 1867 3c. orange (5), 3c. lilac (3), 25c. green (4), 25c. lilac (5, with pair), 30c. (3), 50c. (7, with pair), \$1 blue (4), \$1 lilac (2), \$1.50 light green, and \$1 brown (2), and 1885 1c. (6), 5c. (3), and 10c. (2), some dubious postal cancellations, fair to fine, faults (47).
HK\$ 1,200 - 1,500