



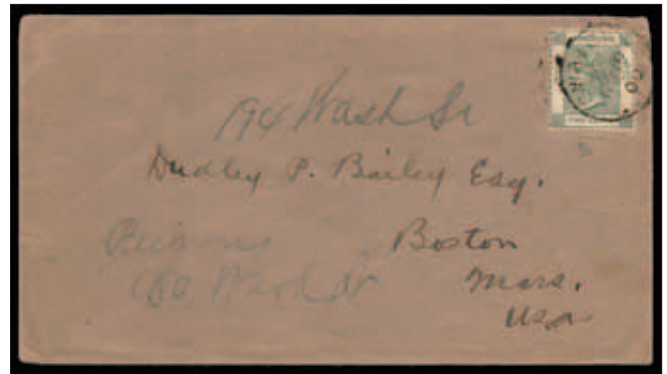
1293



1294



1295



1296



1297



1302



1289



1290



1291

1289

**Cancellations** : 1862 no watermark 2c. brown, 12c. pale greenish blue and 18c. lilac, cancelled by "Shanghae/C" c.d.s., overstruck "B62", few small faults, fine appearing and pleasing examples. S.G. Z765, Z767, Z768. Photo  
HK\$ 1,500 - 2,000

1290

1863-71 4c. slate perf. 12½, two examples, both with rich colour and boldly cancelled by very fine large part "S1" barred obliterations in blue showing the first and second types respectively, small faults and the latter with repair (small piece added) at top, nevertheless of pleasing appearance. Photo

HK\$ 1,200 - 1,500

1291

1863-71 18c. orange, cancelled on piece by vivid nearly complete "sunburst" in blue, very fine. Photo

HK\$ 2,000 - 2,500

1292

1863-71 30c. mauve pair, 48c. rose and 96c. brownish grey, each showing inverted watermark variety and cancelled by fine to very fine strikes of "S1" barred obliterator in blue, the pair is fine and sound while the other two have small faults and are nice appearing, an interesting offering of these watermark varieties used in Shanghai. Photo

HK\$ 1,000 - 1,200



1292

## Swatow

1293

1864 envelope with enclosed letter datelined "Swatow. China/Janry 20th 1864" to Stoneham, Massachusetts "overland via Southampton" showing "Hong Kong/C" c.d.s. (30.1) in blue and "London/Paid" c.d.s. (17.3) in red on reverse, with "Boston Am. Pkt./24 Paid" c.d.s. (1.4) in red, framed "Paid" and "21 Cents" h.s. in red and other ratings in crayon on front, edge tears, a very scarce early item from Swatow. Photo

HK\$ 3,000 - 4,000

1294

1875 (25 Mar.) envelope with return address "United States Consulate, Swatow, China" to St. Louis, Mo. (9.5) "by P.M.S.S. Co. Mail" via Hong Kong (26.3) and San Francisco (29.4) bearing 8c. brownish orange (2, one has a few trimmed perfs. at top left corner), cancelled "B62", with "A/Swatow" origin c.d.s. on reverse and "Hong Kong/Paid All" c.d.s. Photo

HK\$ 3,000 - 4,000

1295

1876 (26 Oct.) envelope to Lima, Ohio via San Francisco (29 Aug.), bearing 1863-71 8c. orange, cancelled by "S2" barred oval in blue, showing "Swatow" origin c.d.s. (26.7) in blue and "Hong Kong/A" c.d.s. (27.7) on reverse and "Hong Kong/Paid All" c.d.s. in red on front, damaged at upper right, an extremely rare usage with only six covers recorded by Pearson with "S2" in blue. Photo

HK\$ 5,000 - 6,000

1296

1900 (19 Nov.) printed matter envelope to Boston, Massachusetts 918.12), bearing 2c. green, cancelled by "Swatow/C" c.d.s. (Webb type C), cover wrinkling at upper right corner, very scarce printed matter rate usage. Photo

HK\$ 1,200 - 1,500

1297

1902 (3 Mar.) 5c. postal stationery envelope registered to Trier, Germany (4.4) bearing 5c. yellow (3) cancelled by "Swatow/C" c.d.s. (Webb type C), showing "R" in circle h.s. adjacent, with "Registered/G.P.O. Hong Kong" double-ring d.s. (4.3) on reverse, very fine. Photo

HK\$ 1,200 - 1,500



1304

1298

1875-1913 selection of envelopes (4) and cards (2) from Swatow to England, Hong Kong, Shanghai and U.S.A (3), 1875 incoming envelope from U.S.A. with U.S.A. 10c. (small fault), fine to very fine, a nice selection.

HK\$ 2,500 - 3,000

1299

Comprehensive collection of cancellations, including "S2" in blue (1) and black (6) with 1880 5c. on 8c., 5c. on 18c. (3) and 10c. on 24c., Swatow type C c.d.s. (22), with Q.V. 5c. blue further collected by year dates (complete 1888-97), type D c.d.s. (7), type E c.d.s. (24) and cancellations on "China" overprints (24), some faults, generally fine to very fine examples (129).

HK\$ 3,000 - 4,000



1300

1301

1305

### Tientsin

1300

1904-06 K.E.VII 5c. dull green and brown-orange, centrally cancelled by nearly complete very fine strike of "B.P.O./Tientsin." across centre circular cancel, with "1 Oct 1907" date h.s. in violet, small corner fault does not detract from this very rare cancel, which is thought to have been made locally and used in the first 6 days of the Post Office's reopening on 1 October. Photo

HK\$ 2,000 - 2,500

1301

1904-06 K.E.VII 10c purple and blue on blue, centrally cancelled by nearly complete "B.P.O./Tientsin." across the centre circular cancel, fine and very rare. Photo

HK\$ 2,000 - 2,500

1302

1907 (6 May) registered envelope to Dunedin, New Zealand (13.6), bearing K.E.VII 1c., 4c., 5c. and 8c., cancelled by "Tientsin/Br. P.O." index C c.d.s. (Webb type B), showing framed "Registered" h.s. in red adjacent, with "Registered/Shanghai Br. P.O." oval d.s. (12.5) and "Auckland N.Z./Registered" c.d.s. (10.6) on reverse, fine. Photo

HK\$ 1,500 - 2,000

1303

Selection of stamps (66), cards (6) and envelopes (3), illustrating cancellations and usages, including Webb type A (9), K.E.VII-franked picture postcards (4) and on "China" overprints (22 + 1 envelope), with K.G.V 10c. block of sixteen and \$5, and 1913 registered envelope to Scotland bearing 4c. and 10c. with framed red registration h.s., some faults as to be expected, generally fine to very fine examples.

HK\$ 2,500 - 3,000

### Wei-Hai-Wei

#### Liu Kung Tau

1304

1900 (13 Sept.) picture postcard to Bohemia, bearing 4c. slate-grey, cancelled by "Liu Kung Tau/Post Office" oval d.s. in violet, with "Hong Kong/C" c.d.s. (22.9) adjacent, minor wrinkling at top right corner barely affecting stamp, extremely fine and choice usage of this rare cancellation. Photo

HK\$ 35,000 - 40,000



1307

1305  
1901 (30 May) piece bearing 5c. blue crisply cancelled by very fine strike of "Liu Kung Tau/Post Office" oval d.s. in violet, bend in stamp not detracting from its, fine and striking appearance. Photo

HK\$ 1,500 - 2,000

**Port Edward**

1306  
1905 (10 July) picture postcard to England via British P.O. in Shanghai (13.7) cancelled by framed "Port Edward/Wei-Hai-Wei" d.s. in violet, very fine. Photo

HK\$ 3,000 - 4,000

1307  
1905 (6 Nov.) picture postcard ("Chefoo") from Chefoo to Wei-Hai-Wei (9.11) bearing Russian Offices in China "Kitai" 2kop. vertical pair, cancelled by "Chifu/Pochtovaya Kontora" double-ring d.s. and showing framed "Port Edward/Wei-Hai-Wei" arrival d.s. in violet, fine and highly unusual incoming mail from the Russian Post Office in China. Photo

HK\$ 10,000 - 12,000

1308  
1907 (4 Nov.) 10c. registered stationery envelope size F to Portsmouth, (6.12), bearing K.E.VII 4c. cancelled by "Liu-Kung-Tau/C" c.d.s. (Webb type C), showing "R" in circle h.s. adjacent, with "Chefoo/British P.O." c.d.s. (4.11) and "Registered/London" oval d.s. (5.12) on reverse, rather soiled in places. Photo

HK\$ 3,000 - 4,000

1309  
1910 (8 Mar.) registered envelope to London (24.3) bearing K.E.VII 4c. and 10c., cancelled by "Liu-Kung-Tau/A" c.d.s. (Webb type C), showing rare framed "R/Liu-Kung-Tau, B.P.O." h.s. (unrecorded in Webb), light staining at top, backflap removed, rare usage. Photo

HK\$ 4,000 - 5,000



1308



1309



1306



1310



1313



1314



1315



1317



1318



1321

1310

1910 (5 Aug.) 10c. registered stationery envelope size G (a little reduced at left) to Shanghai (8.8), bearing K.E.VII 4c. cancelled by "Liu-Kung-Tau/C" c.d.s. (Webb type C, but with first hyphen vertical), showing rare framed "R/Liu-Kung-Tau B.P.O." h.s. adjacent, with "Registered/Shanghai B.P.O." oval d.s. on reverse, very fine. Photo

HK\$ 8,000 - 10,000

1311

Selection of K.E.VII cards (9) and envelopes (2) with on "China" overprints, all with "Liu Kung Tau" origin c.d.s., fine to very fine.

HK\$ 3,500 - 4,000

1312

Collection of cancellations, including "Liu Kung Tau" oval (4) with \$1 on 96c., "Liu Kung Tau" Webb type B c.d.s. (26) with Q.V. watermark CC 12c. and Q.V. 2c. dull green pair showing "A" index letter, framed "Port Edward" d.s. (13) with Q.V. 10c. (58), some faults as to be expected, generally fine to very fine, with some very scarce or rare usages (134).

HK\$ 4,000 - 5,000

### Yokohama

1313

1867 (26 Mar.) entire from London to Yokohama bearing Great Britain 4d. vermilion plate 8 and 1sh. green plate 4 (small corner fault) cancelled by "46" barred obliterator, with sender's cachet adjacent and London origin c.d.s. in blue and "Hong Kong/C" c.d.s. (5.4) on reverse, "1d" rating h.s. in red which also ties stamp, very fine. Photo

HK\$ 1,800 - 2,000

1314

1867 (30 Oct.) entire letter to Lyon (20.12) "via Marseilles" with "Gutschow & Co./Yokohama" sender's cachet, showing "Yokohama/A" origin c.d.s. and "Hong Kong/C" c.d.s. (12.11) in blue on reverse, with "Hong Kong/Paid/C" (13.11) and Marseilles arrival c.d.s., and "P.P." and framed "PD" h.s. all in red on front, rated "8" and "1/-", fine and also a very late use of the "Hong Kong/Paid" c.d.s. Photo

HK\$ 2,000 - 2,500

1315

1869 (23 Aug.) entire letter to Mondovi, Italy (15.10) "via Brindisi" bearing 8c. orange and 24c. green (small repair at lower right corner) showing framed "Piroscoffi/Postali/Italiani" h.s. tying stamps, with "Yokohama/A" origin, "Hong Kong/A" (1.9), Alexandria (10.10), Brindisi and Torino c.d.s. on reverse, rated "20", "1/-" and "4", fine and very scarce usage showing the framed Italian ship marking. Photo

HK\$ 6,000 - 8,000

1316

1869 (10 Sept.) entire letter from London to Yokohama (1.11) "via Marseilles" bearing Great Britain 6d. plate 8 and 1/- plate 4, cancelled by "London/10" duplex, showing "Yokohama/A" and "Hong Kong/C" (21.10) c.d.s. on reverse, very fine.

HK\$ 1,000 - 1,200

1317

1872 (4 Oct.) entire from London to Yokohama (24.11) "via Brindisi" bearing Great Britain 1d. plate 121, 4d. plate 12 and 1/- plate 6 (with "T & Co." perfins), cancelled by "London/19" duplex, showing "Yokohama/A" (24.11) in blue and "Hong Kong/C" (14.11) c.d.s. on reverse, very fine and colourful. Photo

HK\$ 1,000 - 1,200

1318

1878 (31 Dec.) envelope to Pembrokeshire, England (2.16.79) bearing 12c. cancelled by "Y1" barred obliterator in black with matching "Yokohama/A" origin c.d.s. adjacent, with "Hong Kong/A" (7 & 8.1.79) and "London" in red (15.2.79) c.d.s. on reverse. Photo

HK\$ 4,000 - 5,000

1319

**Cancellations** : 1863-71 2c. 24c., 30c. mauve, 48c. and 96c. brownish grey, two sets, cancelled by blue and black "Y1" barred ovals respectively, fine to very fine strikes with wing margin example of the 2c., 18c., 24c. and 30c. with black "Y1", and 18c. with blue "S1" has inverted watermark (defects), couple small faults, fine to very fine examples (20).

HK\$ 3,500 - 4,000

1320

The collection of "Y1" postmarks in both blue and black, with thin and thick strikes, including 1862 no watermark 18c., 1863-71 12c. (2) used on piece with 8c., 8c. cancelled "S1" on large piece with framed "Maron/Yokohama" h.s. and 30c. marked with "HSBC" perfin cancelled by Japanese "Yokohama" c.d.s. on piece, and 1876-77 28c. on 30c. (2), mixed condition, generally very good to fine examples (62).

HK\$ 3,000 - 3,500

### MACAO

1321

1842 (13 Oct.) entire tp London (7.2.43), "via Marseilles", per "Wm Strupples" showing framed "Overland/via/Falmouth/Russell & Co" h.s. in red, used by their Macao Office (which has been crossed out, along with home of ship originally intended to be sent on), oval "India" h.s. in red, rated "3/6", very fine. Photo

HK\$ 3,000 - 4,000